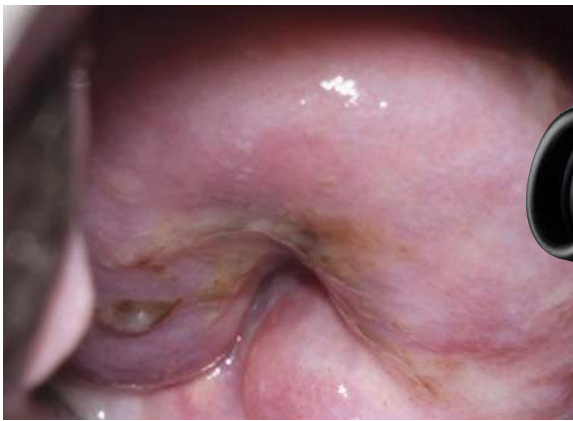


LEISEGANG®

Unmatched Clarity and 3-D Visualization

The Gold Standard in Colposcopes



The best colposcope for
your analysis. . .the most
accurate diagnosis for
your patients





OptiK Model 2

The 18-megapixel
Canon® 600D T3i dSLR
provides digital documentation
of your colposcopic images.
Its unique adjusting display
allows for greater flexibility
in your office.

OptiK Series Colposcopes... only from LEISEGANG®

Better Contrast, 3-D Clarity and Visualization

The Gold Standard in Colposcopy

LEISEGANG celebrates more than 60 years as a world leader in colposcope design and production, recognized for German precision, clarity and durability. LEISEGANG OptiK LED colposcopes shed an uncompromising light and bright optical brilliance on all visual assessments. Select the OptiK Model 1 for routine colposcopy or the OptiK Model 2 for digital colposcopy. Both offer the highest-intensity LED on the market matched with the best optics for enhanced clarity and contrast. The optical brilliance achieved in LEISEGANG is unparalleled.

High-Intensity LED Illumination

LEISEGANG colposcopes use the brightest LED light on the market. It transmits 2.5x more luminance than halogen for greater visibility of cellular and vascular changes, it outperforms other LED-lighted colposcopes in terms of stereoscopic 3-D visualization and matching daylight color temperature, and it delivers a stable color spectrum. This provides for highly improved contrast balance, better clarity and less shadowing for unsurpassed anatomy visualization. Plus, our LEDs have a working life of 20,000 hours or about 20 years of service...ensuring long-lasting dedicated service without compromise.

Precision German Optics

Specially-selected, hand-polished and set glass optics are used in all LEISEGANG OptiK colposcopes. The use of internal multiple mirrors is minimized to allow for maximum light exposure. Small apertures provide the greatest depth-of-field for unsurpassed clarity. Precision manufacturing ensures a par focal magnification for dynamic range of detail. This means that once focused on a region of interest, the colposcope will stay in focus throughout the 3-step magnification. Furthermore, the optics provide for a convergent optical pathway, which mimics the human eye and reduces eye fatigue.

OptiK Model 2 for Digital Records

Whether your need is to manage your patients' visits, track and compare their colposcopic examinations, or document colposcope images and reports in your EMR system, CooperSurgical offers a LEISEGANG system to suit your needs. The OptiK Model 2 line of colposcopes incorporates a digital single lens reflex (dSLR) camera externally mounted to the colposcope head. A high-quality 18-megapixel Canon 600D T3i camera is the latest in photo-colposcope technology, providing high-quality digital images for direct download or incorporation into our CerviPATH™ or ImageQUEST patient management systems.



Precision manufacturing of both the OptiK 1 and OptiK 2, using the highest-quality optics, provides par focal three-dimensional visualization in all magnification settings.

Spend more time examining your patients and less time adjusting your colposcope settings.

"The clarity is unmatched. The old LEISEGANGs were very good. The new OptiK models are so much better. The new LEISEGANG's LED lighting is much brighter. It's easier to see nuances and for picking up subtle lesions that you may otherwise miss when you biopsy. You can see and notice a difference right away.

"I need the best: you don't want to miss something small. You WILL miss those subtle lesions without the best colposcope. It's not only the best for me...it's the best for the patient...obviously."

Kevin Mitchell, M.D. – Danbury, CT



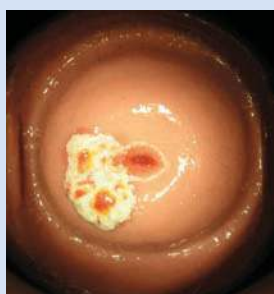
OptiK Model 1

Discover the LED difference

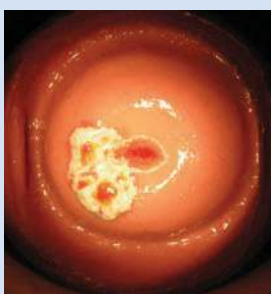
Better contrast.
Better clarity.
Better visualization.

Illumination Comparison

Halogen



100%



Dimmed

LEISEGANG OptiK LED

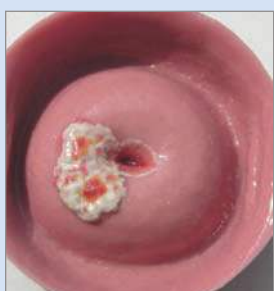


100%



Dimmed

Daylight



LEISEGANG OptiK's concentrated white LED ray provides more illumination and greater visibility compared with dimmer halogen lights or diffused LED systems.

Not only is OptiK brighter, it is also more energy-efficient.

Table A: Comparison of Halogen and LED Illumination

	Competitors	LEISEGANG Halogen (discontinued)	LEISEGANG LED
Power Input	100W / 150W	75W	16W
Light efficiency	4.5%	4.5%	25%
Remaining light output	4.5W / 6.75W	3.4W	4.5W
Reduction through coupling into optical fiber	80%	80%	N/A
Remaining light output at the object	3.6W / 5.4W	2.7W	N/A
Reduction through beam splitter	50%	N/A	N/A
Resulting light output	1.8W / 2.7W	2.7W	4.5W
Color temperature* in Kelvin	2,000	3,800 – 4,200	5,000 – 5,600
Contrast / Characteristic of color	Satisfactory / Very heavy reddish impression	Good / Heavy with reddish impression	Very good / Well-balanced
Image impression	Acceptable	Good	Very good

*Data on file.

CooperSurgical

CooperSurgical is the leading company dedicated to providing medical devices and procedure solutions that improve health care delivery to women regardless of clinical setting. Our company is fostering that position through expansion of its core businesses and introduction of advanced technology-based products, which aid clinicians in the management and treatment of commonly seen conditions.

800.243.2974 | 203.601.5200 | coopersurgical.com | 95 Corporate Drive | Trumbull, CT 06611
Also on [YouTube.com/coopersurgical](https://www.youtube.com/coopersurgical)