

www.guerbet.com

Follow Guerbet on social media



CONTACT

If you need more informations,
feel free to contact your sales representative

Guerbet |

References **1.** Data on file **2.** USA PI as of August 2018. https://www.accessdata.fda.gov/drugsatfda_docs/label/2013/204781s000lbl.pdf **3.** de Kerviler E, Maravilla K, Meder JF, Naggara O et al. Adverse Reactions to Gadoterate Meglumine: Review of Over 25 Years of Clinical Use and More Than 50 Million Doses. *Invest Radiol.* 2016 Sep;51(9):544-51. doi: 10.1097/RLI.0000000000000276 **4.** Radbruch A, Weberling LD, Kieslich PJ, Eidel O, et al. Gadolinium Retention in the Dentate Nucleus and Globus Pallidus Is Dependent on the Class of Contrast Agent. *Radiology.* 2015 Jun;275(3):783-97 **5.** Radbruch A, Weberling LD, Kieslich PJ, Hepp J, et al. Intraindividual Analysis of Signal Intensity Changes in the Dentate Nucleus After Consecutive Serial Applications of Linear and Macrocytic Gadolinium-Based Contrast Agents. *Invest Radiol.* 2016 Nov;51(11):683-690 **6.** Eisele P, Alonso A, Szabo K, Ebert A, et al. Lack of increased signal intensity in the dentate nucleus after repeated administration of a macrocyclic contrast agent in multiple sclerosis: An observational study. *Medicine (Baltimore).* 2016 Sep;95(39):e4624. doi: 10.1097/MD.00000000000004624 **7.** Radbruch A, Haase R, Kieslich PJ, Weberling LD, et al. No Signal Intensity Increase in the Dentate Nucleus on Unenhanced T1-weighted MR Images after More than 20 Serial Injections of Macrocytic Gadolinium-based Contrast Agents. *Radiology.* 2017 Mar;282(3):699-707. doi: 10.1148/radiol.2016162241. Epub 2016 Dec 7 **8.** Radbruch A, Haase R, Kickingereder P, Bäumer P, et al. Pediatric Brain: No Increased Signal Intensity in the Dentate Nucleus on Unenhanced T1-weighted MR Images after Consecutive Exposure to a Macrocytic Gadolinium-based Contrast Agent. *Radiology.* 2017 Jun;283(3):828-836. doi: 10.1148/radiol.2017162980. Epub 2017 Mar 8 **9.** Dotarem: Summary of product specifications **10.** Ishiguchi T, Takahashi S. Safety of Gadoterate Meglumine (Gd-DOTA) as a Contrast Agent for Magnetic Resonance Imaging. Results of a post-marketing surveillance study in Japan. *Drugs R D.* 2010;10(3):133-45 **11.** Emond S, Brunelle F. Gd-DOTA administration at MRI in children younger than 18 months of age: immediate adverse reactions. *Pediatr Radiol.* 2011 Nov;41(11):1401-6. doi: 10.1007/s00247-011-2167-3. Epub 2011 Jul 24 **12.** Maurer M, Heine Q, Wolf M, Durmus T, et al. Tolerability and diagnostic value of gadoteric acid in the general population and in patients with risk factors: results in more than 84,000 patients. *Eur J Radiol.* 2012 May;81(5):885-90. doi: 10.1016/j.ejrad.2011.04.022. Epub 2011 May 8 **13.** Soyer P, Dohan A, Patkar D, Gottschalk A. Observational Study on the Safety Profile of Gadoterate Meglumine in 35,499 Patients: The SECURE Study. *J Magn Reson Imaging.* 2017 Apr;45(4):989-997. doi: 10.1002/jmri.25486. Epub 2016 Oct 11 **14.** de Kerviler E, Maravilla K, Meder JF, Naggara O, et al. Adverse Reactions to Gadoterate Meglumine: Review of Over 25 Years of Clinical Use and More Than 50 Million Doses. *Invest Radiol.* 2016 Sep;51(9):544-51. doi: 10.1097/RLI.0000000000000276 **15.** Balassy C, Roberts D, Miller SF. Safety and efficacy of gadoteric acid in pediatric magnetic resonance imaging: overview of clinical trials and post-marketing studies. *Pediatr Radiol.* 2015 Nov;45(12):1831-41. doi: 10.1007/s00247-015-3394-9. Epub 2015 Jun 5

P19 202 MIS - October 2019 - SMM S1 - The graphical layout and all its parts are property of SMM and may not be reproduced or copied without written consent of SMM

Mentions légales abrégées corporate / Key words

DOTAREM (Gadoteric Acid)

International Birth Date: March 31 st, 1989 (France)
Refer to CCDS C017345-03

GUERBET
BP 57400
95943 Roissy CdG Cedex France

DOTAREM 0.5 mmol/mL, solution for injection. **Composition:** For 100 mL of solution: active ingredient: Gadoteric Acid 27.932 g corresponding to: DOTA 20.246 g corresponding to gadolinium oxide 9.062 g. **Indications (*):** Medicinal product for diagnostic use only: Magnetic Resonance Imaging for cerebral and spinal disease, diseases of the vertebral column, and other whole-body pathologies (including angiography). Dotarem should be used only when diagnostic information is essential and not available with unenhanced magnetic resonance imaging (MRI). **Posology and method of administration:** The recommended dose is 0.1 mmol/kg, i.e. 0.2 mL/kg in adults and children. The lowest dose that provides sufficient enhancement for diagnostic purposes should be used. The dose should be calculated based on the patient's body weight, and should not exceed the recommended dose per kilogram of body weight detailed in this section. In angiography, depending on the results of the examination being performed, a second injection may be administered during the same session if necessary. Angiography with Gadoteric acid is not recommended in children (0-18 years). In Encephalic and spinal MRI, in some exceptional cases, as in the confirmation of isolated metastasis or the detection of leptomeningeal tumours, a second injection of 0.2 mmol/kg may improve tumor characterisation and facilitate therapeutic decision making. For patients with impaired renal function and paediatric population (0-18 years) more than one dose should not be used during a scan, injections should not be repeated unless the interval between injections is at least 7 days. The product must be administered by strict intravenous injection. Depending on the amount of gadoteric acid to be given to the child, it is preferable to use gadoteric acid vials with a single use syringe of a volume adapted to this amount in order to have a better precision of the injected volume. In neonates and infants the required dose should be administered by hand. **Contraindications:** Hypersensitivity to gadoteric acid, to meglumine or to any medicinal products containing gadolinium. **Special warnings and precautions for use:** Dotarem must not be administered by subarachnoid (or epidural) injection. The usual precaution measures for MRI examination should be taken such as exclusion of patients with pacemakers, ferromagnetic vascular clips, infusion pumps, nerve stimulators, cochlear implants or suspected intracorporal metallic foreign bodies, particularly in the eye. **General particulars corresponding to all gadolinium contrast agents:** All gadolinium based contrast media can cause minor or major hypersensitivity reactions that can be life-threatening. These can occur immediately (within 60 minutes) or be delayed (within 7 days) and are often unpredictable. Because of the risk of major reactions, emergency resuscitation equipment should be available for immediate use. Hypersensitivity reactions can be aggravated in patients on betablockers and particularly in the presence of bronchial asthma. These patients may be refractory to standard treatment of hypersensitivity reactions with beta agonists. Impaired renal function: Prior to administration of gadoteric acid, it is recommended that all patients are screened for renal dysfunction by obtaining laboratory tests. There have been reports of Nephrogenic Systemic Fibrosis (NSF) associated with use of some gadolinium-containing contrast agents in patients with severe renal impairment (GFR < 30 mL/min/1.73 m²). As there is a possibility that NSF may occur with Dotarem, it should only be used in these patients after careful consideration. CNS disorders: As with other contrast agents containing gadolinium, special precautions should be taken in patients with a low seizure threshold. Precautionary measures, e.g. close monitoring, should be taken. All equipment and drugs necessary to counter any convulsions which may occur must be made ready for use beforehand. **Interactions with other medicinal products and other forms of interaction:** No interactions with other medicinal products have been observed. Formal drug interaction studies have not been carried out. **Fertility, pregnancy and lactation:** Gadoteric acid should not be used during pregnancy unless the clinical condition of the woman requires use of gadoteric acid. Continuing or discontinuing breast feeding for a period of 24 hours after administration of gadoteric acid, should be at the discretion of the doctor and lactating mother. **Effects on ability to drive and use machines:** No studies on the effects on the ability to drive and use machines have been performed.

Ambulant patients while driving vehicles or operating machinery should take into account that nausea may incidentally occur. Undesirable effects: Uncommon ($\geq 1/1000$ to $< 1/100$): hypersensitivity, headache, dysgeusia, dizziness, somnolence, paraesthesia (including burning sensation), hypotension, hypertension, nausea, abdominal pain, rash, feeling hot, feeling cold, asthenia, injection site reactions (extravasation, pain, discomfort, oedema, inflammation, coldness). Rare ($\geq 1/10\ 000$ to $< 1/1\ 000$): anxiety, presyncope, eyelid edema, palpitations, sneezing, throat tightness, vomiting, diarrhea, salivary hypersecretion, Urticaria, pruritus, hyperhidrosis, chest pain, chills. Very rare ($< 1/10\ 000$): anaphylactic reaction, anaphylactoid reaction, agitation, coma, convulsion, syncope, tremor, parosmia, conjunctivitis, ocular hyperaemia, vision blurred, lacrimation increased, tachycardia, cardiac arrest, arrhythmia, bradycardia, flushing, pallor, vasodilatation, hot flush, cough, dyspnoea, nasal congestion, respiratory arrest, bronchospasm, throat irritation, laryngospasm, pharyngeal oedema, dry throat, pulmonary oedema, erythema, angioedema, eczema, muscle cramps, muscular weakness, back pain, arthralgia, malaise, chest discomfort, pyrexia, face oedema, injection site necrosis (in case of extravasation), phlebitis superficial, decreased oxygen saturation, Not known : nephrogenic systemic fibrosis. **Overdose:** Gadoteric acid can be removed by haemodialysis. However there is no evidence that haemodialysis is suitable for prevention of nephrogenic systemic fibrosis. **Please note:** The peel-off tracking label on the vials or syringes should be stuck onto the patient record to enable accurate recording of the gadolinium contrast agent used. The dose used should also be recorded. If electronic patient records are used, the name of the product, the batch number and the dose should be entered into the patient record. **Pharmacological properties:** Pharmacotherapeutic group: paramagnetic contrast media for MRI, ATC code: V08CA02. Presentation (*): 5, 10, 15, 20, 60 & 100 mL in vial (glass) and 10, 15 & 20 mL in a prefilled syringe (glass). **Marketing authorization holder: (*)** **Information:** Guerbet - BP 57400 - F-95943 Roissy CdG cedex – FRANCE. Tel: 33 (0) 1 45 91 50 00. **Date of revision of this document:** February 2018

For current and complete prescribing information refer to the package insert and/or contact your local Guerbet organization.

(*) Indications, presentations and marketing authorization holder may differ from country to country.

Reporting of suspected adverse reactions is important as it helps to continuously assess the benefit-risk balance.

Therefore, Guerbet encourages you to report any adverse reactions to your health authorities or to our local Guerbet representative.

OptiStar® Elite is a medical device intended for use by medical imaging and diagnostic health professionals, for injection of contrast media and saline solutions during MR exams
OptiStar® Elite: Class IIb – Disposables: Class IIa – CE0123 – Manufacturer: Liebel-Flarsheim Company LLC - 2111 East Galbraith Road, Cincinnati, OH 45237, USA.

Contrast&Care® is a medical device intended for use by healthcare professionals only. It allows imaging centers to collect, archive, view and share patients' injection data, including data concerning contrast products, adverse events, injector activity, data on the estimated eGFR and other pre-exam alerts, such as previously reported allergies.

Contrast&Care® also provides options to review protocols, create protocol libraries, and visualize analytics data and trends relating to injection activity and contrast product usage.

For complete information about precautions and optimal usage conditions, we recommend consulting the instruction for use supplied with the device or by your local Guerbet representative(s).

For use only in countries with applicable health authority registrations Class I/CE.

Manufacturer: MEDEX, 240 allée Jacques Monod, 69800 Saint-Priest, France

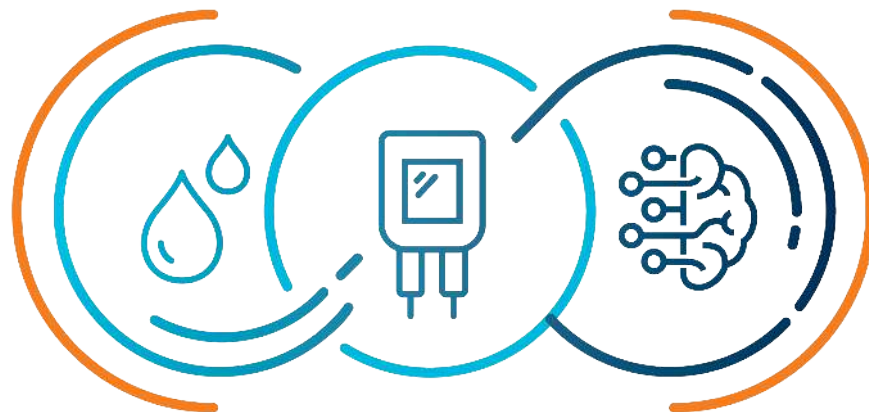
Distributor: Guerbet, (Roissy CdG cedex, France) tel: +33 (0)1 45 91 50 00

www.guerbet.com - www.contrastncare.com

OptiStar® Elite and Contrast&Care® are a trademark of Guerbet. Issued patents. © Copyright 2015 Guerbet - All rights reserved.

Guerbet |

MRI Interconnected Solutions



UNIK

Tailored interconnected solution
driving your journey to excellence

Do you want to discover more?

Guerbet |

COMMITTED

CONTRAST AGENT



INJECTOR



DIGITAL SOLUTIONS



SERVICE
& SUPPORT



U N I K

DOTAREM®
gadoteric acid

★ **Safety**

Zero unconfounded cases of NSF & no visible brain hyperintensities²⁻⁸

Low rate of adverse events⁹⁻¹⁴

★ **Experience**

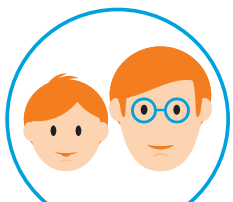
More than 30 YEARS of experience with more than

100.000.000 DOSES INJECTED globally¹



★ **Performance**

Available in vials and pre-filled syringes (PFS) for an efficient drug delivery-method⁹



Optimal diagnostic results in adults & children^{12,15}

OptiStar® Elite

MRI CONTRAST DELIVERY SYSTEM

★ **Simplicity**

One click loading and auto-retract rams for efficient turnaround

★ **Efficiency**

Powerhead keys to allow control at your fingers

Battery free to save time and cost

★ **Security**

Patency check & variable drip mode to test the patient's vein & to maintain the venous access



Contrast&Care.

INJECTION MANAGEMENT SOLUTION

★ **Traceability**

Facilitate traceability and save administration time



★ **Informed Decision**

A complete view on all relevant patient information including injection history



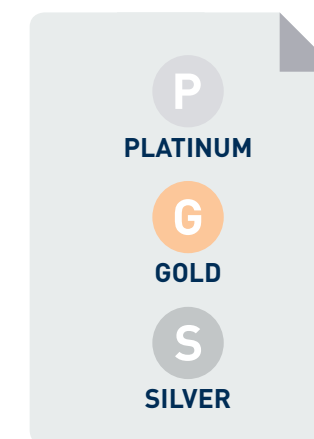
★ **Analytics**

Improve your injection practices and optimize contrast media utilization

OptiProtect™

GUERBET SERVICE + SUPPORT

A 360° technical support. We've got you covered



P
PLATINUM
G
GOLD
S
SILVER

result for your MRI department and Patients



PATIENTS
Safety



MRI DEPARTMENT
Efficiency
Standardization
(cost-saving & time-saving)